

Open Space Acreage

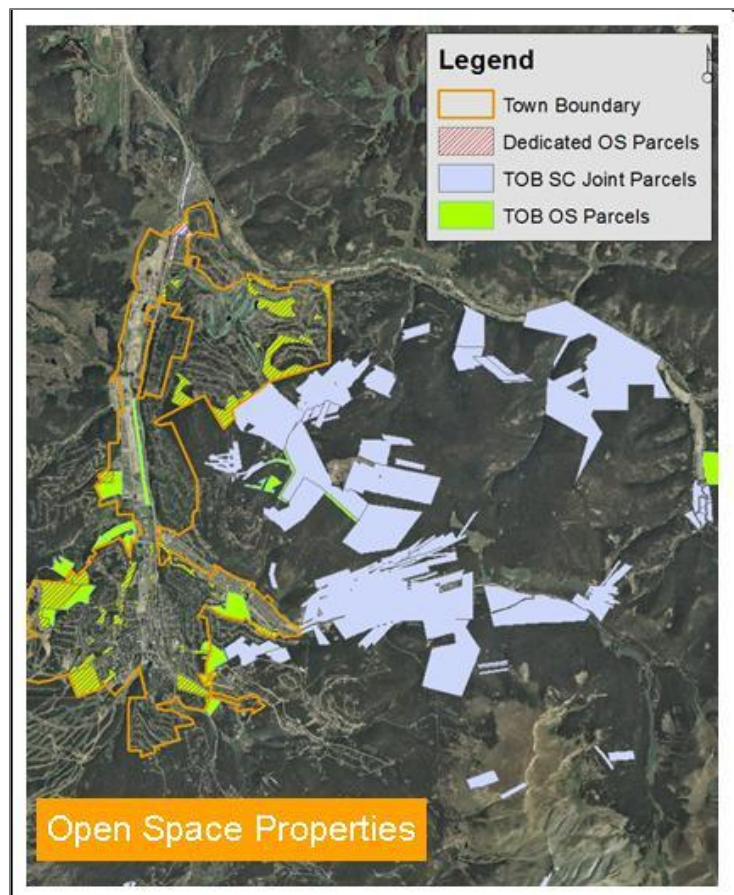


In 2015, 65.6 acres of open space property was acquired, 61.3 acres of which was jointly acquired with Summit County Government. Since the open space program was founded in 1996, there has been positive growth in acres of open space during each year of the program.

Overview

Prior to the establishment of the Open Space program in 1997, the Town had 119 acres of open space in its inventory. Today the program manages 4,610 acres of open space, 3,848 acres of which was jointly acquired with Summit County Government.

In 1996 a voter initiative passed which dedicated an additional 0.5% Town sales tax to open space acquisition and management. In the 16 years since its adoption, the Town's open space program has acquired a total of 4,491 acres of property through purchases, land trades, dedications and joint purchases with Summit County Government. Of the 4,491 acres, 3,925 have been purchased and 566 acres have been acquired through land trades and dedications.



The majority of open space acquisitions have been located outside of Town limits (4,047 acres out of Town versus 563 acres in-Town). The development philosophy in the Joint Upper Blue Master Plan has been to focus development in the core of Town and minimize development in the surrounding backcountry.

More Information

- Town of Breckenridge Open Space Department - <http://www.townofbreckenridge.com/index.aspx?page=426>

